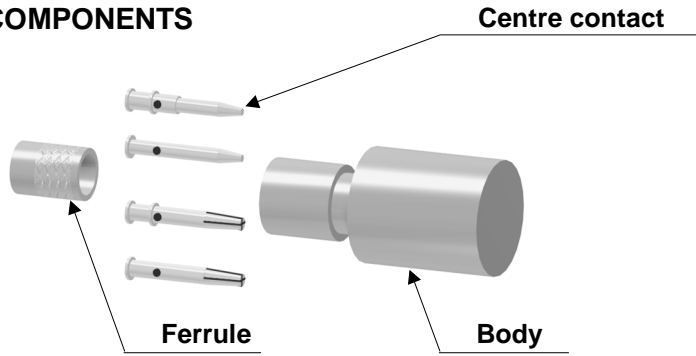
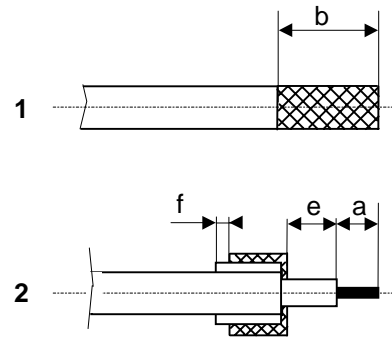


# Crimp 09 : Reverse crimping

## COMPONENTS

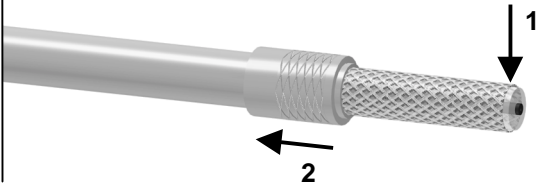


## STRIPPING DIMENSIONS



1

Strip the cable as shown in sketch 1.  
Slide the ferrule until it bottoms against the sleeve.



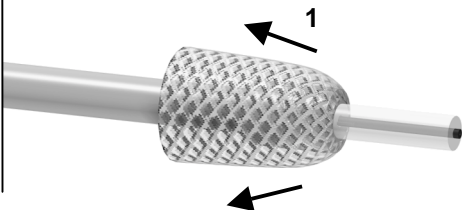
4

Slide the centre contact on until it bottoms against the insulator back nut.  
Solder or crimp the contact with crimping tool ( see connector TDS ).



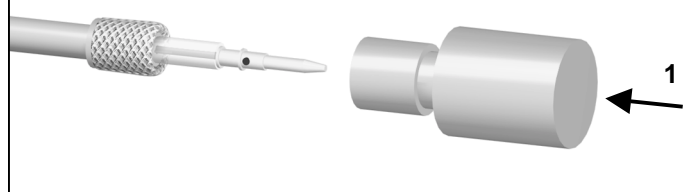
2

Fold the braid back.  
Trim off the extra braid as shown in sketch 2.



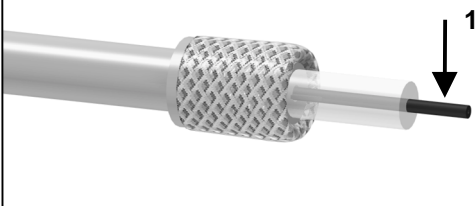
5

Mount the body onto the sub-assembly.



3

Trim the inner conductor as shown in sketch 2.



6

Crimp the body with crimping tool ( see connector TDS ).

